



MAD COWLS

PROBLEM SOLVING CHIMNEY COWLS



A family business

A FAMILY TRADITION

MAD Cows is a market-leading brand name of JD Burford Ltd, a family business that has been manufacturing Metal Anti Down-draught chimney cowl for more than 30 years.

GUARANTEED QUALITY

As an established metal working Engineering Company, we know the capabilities of the materials used to manufacture our range of chimney cowl, whilst also possessing the greatest experience in engineering aerodynamic shapes that are structurally strong enough to maintain integrity in the worst weather conditions. All MAD Cows listed with the phrase 'Backed up by the MAD Cowl Money-back guarantee' are covered by a quality guarantee (see back of brochure for further details). Therefore, buying a MAD cowl means you are buying the highest quality chimney cowl that has been designed and engineered for purpose.

CUSTOMER SERVICE

The customer is the most important aspect of our company. Therefore, at MAD Cows, we have become known for our high level of service. All mainline products are delivered within 48 hours of receipt of order.





MADE TO MEASURE

The test of a true chimney cowl manufacturer is when their standard products don't match a customer's requirement. This is where MAD cowls really are ahead of the game. In these circumstances we are able to advise and manufacture the correct bespoke cowl for the purpose, rather than adapting chimney cowls that are not fit for bespoke circumstances.

EXPERT ADVICE

Where chimney cowls are concerned, you know you will get the right advice about right product that suits your application. The advice and knowledge that we freely share (with anyone that makes contact with us regarding their chimney related problems), is thorough, honest and above all, correct.

HONESTY

Throughout our brochure you will see fuel suitability/recommendation charts, showing which fuels can be used with each type of chimney cowl. Where other manufactures recommend that chimney cowls made from aluminium and galvanised steel are suitable for smokeless fuel, we do not. Smokeless fuel is a highly corrosive fuel that will deteriorate aluminium and galvanised steel at an increased rate. It is our responsibility as a customer-orientated manufacturer to make you aware of this fact. Our chimney cowls made from aluminium are of the highest quality on the market, but it would be dishonest not to point out where stainless steel products would be more appropriate.

MAD COWL

THE GO-TO PRODUCT FOR SMOKE AND FUME BLOWBACK, RAIN AND BIRD ENTRY.

The attractive technical design and compact shape look aesthetically pleasing when fitted, whilst the aerodynamic abilities of the MAD cowl are highly effective at combating down draughts within the chimney, making this the most popular anti downdraught chimney cowl in our range.

The MAD cowl features an integral guard to prevent birds and vermin entering the chimney, plus it incorporates a specially designed drainage system that helps divert rain water away from the chimney pot.

The *standard* MAD Cowl is made from 1.2mm Aluminium with stainless steel structural support arms, stainless steel rivets, and a stainless steel bird guard.

We also now make an *all stainless* version of this very popular cowl (see picture 63). See our fuel suitability chart for recommendation as to which fuels can be used in conjunction with the MAD Cowl variants.

BIRD ENTRY

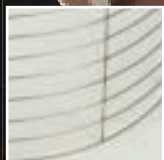
An integral stainless steel, gas compliant birdguard is included in the fully assembled *standard* cowl. We recommend this is removed for coal and wood applications. Separately, the *all stainless* version has a coal, wood, oil and smokeless fuel integral birdguard fitted as standard, so there is no need for removal.

FEATURES & SPECIFICATIONS:

- Sold fully assembled and ready to fit in minutes
- No special tools required when fitting
- Backed up by our money back guarantee
- Sold complete with stainless steel hook bolt or strap fixing kit, whichever is desired (see pic. 8)
- Stainless steel birdguard
- Has test certificates to BSEN 1856-1:2003 and BSEN 1443:2003
- Suitable for pot sizes up to 300mm outer diameter. For pots between 125mm and 175mm (5" & 7"), an adaptor plate is also required (see pic. 9)
- Dimensions of product: height 140mm, width 310mm
- Recommended birdguard is removed for solid fuel applications – see bird entry section above
- Highly effective in preventing downdraught
- Withstands flue temperatures up to 200°C

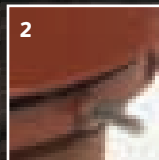


1
MAD Cowl,
Terracotta,
strap fix

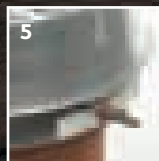


Stainless birdguard

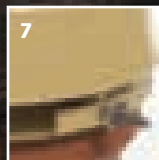
BOLT FIXINGS



2
Terracotta



5
Aluminium



7
Buff

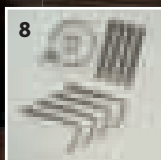
MAD STAINLESS COWL

NEW PRODUCT

63
MAD Cowl,
Stainless,
strap fix

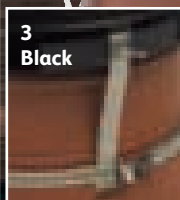
This all stainless version has a coal, wood, oil and smokeless fuel integral bird guard fitted as standard, so there is no need to remove the bird guard for these fuels.

FITTINGS

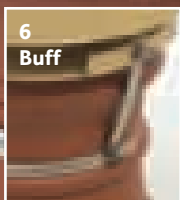


1.2mm aluminium adaptor plate used to reduce size of MAD Cowl, MAD Junior and MAD Senior cowls when gas flue sizes are between 125 and 175mm.

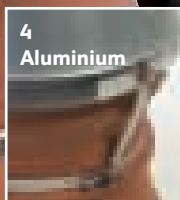
STRAP FIXINGS



3
Black



6
Buff



4
Aluminium

MAD BOX COWL

Box-shaped anti downdraught cowl.

FEATURES & SPECIFICATIONS:

- 1mm aluminium
- Sold complete with hook bolt or strap fixing kit (whichever desired)
- No tools required for fitting
- Withstands flue temperatures of up to 200°C
- Fits all flue sizes up to 250mm



45
MAD Box Cowl,
bolt fix

FUEL SUITABILITY

	COAL	WOOD	GAS	OIL	SMOKELESS FUELS
MAD Cowl aluminium	✓	✓	✓	✓	✗
MAD Cowl painted*	✓	✓	✓	✓	✗
MAD Cowl stainless	✓	✓	✗	✓	✓
MAD Box Cowl	✓	✓	✗	✓	✗

* Painted = terracotta, black, buff

MAD SENIOR

A MASTERCLASS PRODUCT

With all the vast technical knowledge we possess in the design and manufacture of chimney cowl, it is our expressed opinion that the MAD Senior cowl is the best circular shaped static anti down draught cowl on the market.

It truly is a class above everything in terms of offering the best in the way of smoke and blow back reduction, rain entry reduction, and bird and vermin protection.

In standard guise the MAD Senior has an outer shroud made from 1.2mm aluminium with carefully redesigned stainless steel structural support arms that provide maximum support in heavy storms. It also benefits from stainless steel rivets and a stainless steel integral birdguard.

There is also a new all stainless version of our best performing cowl. See our fuel suitability chart that recommends which fuels that can be used in conjunction with the MAD Senior variants.

BIRD ENTRY

A stainless steel integral bird guard is included in this fully assembled cowl. To ensure compliance with gas safety standards this cowl will come fitted with a gas birdguard, which we recommend is removed for coal and wood applications. Separately, the *all stainless* version (Pic.56) has a coal, wood, oil and smokeless fuel integral bird guard fitted as standard, so there is no need to remove the bird guard on this model.

FEATURES & SPECIFICATIONS:

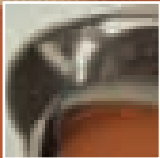
- Sold fully assembled and ready to fit
- No special tools required when fitting
- Stainless steel birdguard
- Sold complete with stainless strap fixing
- Has a test certificate to BSEN 1856-1:2003 and BSEN 1443:2003
- Dimensions of cowl, height 149mm, width 400mm
- Suitable for flue sizes 125-280mm outside diameter
- For pots between 125mm and 175mm (5" to 7"), an adaptor plate is also required
- Highly effective in preventing downdraught
- Withstands flue temperature up to 200°C
- Backed up by the MAD cowl money back guarantee
- Suitable for all fuels, although recommended removal of birdguard for solid fuel application – see bird entry section above

10
MAD Senior
Terracotta
strap fix

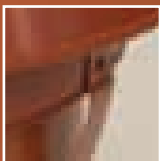


56

MAD Senior
Stainless
steel, strap fix



Internal support provides strength right across the body of the cowl.



Our integrated strapping system allows for easier fitting, negating the need to bolt separate leg attachments onto the cowl. Strap-down legs are colour matched to the body of the cowl so that they do not stand out from the rest of the cowl and chimney pot – particularly advantageous in conservation areas or when there is a need to fit a chimney cowl to a listed building.

MAD JUNIOR

OUR LEAST EXPENSIVE STATIC ANTI DOWNDRAUGHT CHIMNEY COWL

Although it is the least expensive in our down-draught range, we have not compromised on materials. Made from high quality aluminium with a stainless steel birdguard, this cowl still exceeds the quality of materials used by many of our competitors.

BIRD ENTRY

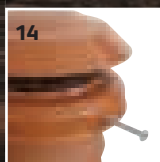
A stainless steel integral bird guard is included in this fully assembled cowl. To ensure compliance with gas safety standards this cowl will come fitted with a gas birdguard, which we recommend is removed for coal and wood applications.

FEATURES & SPECIFICATIONS:

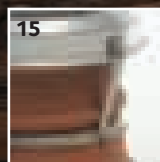
- Sold fully assembled and ready to fit
- No special tools required when fitting
- Stainless steel birdguard
- Sold complete with stainless steel hook or strap fixing kits (whichever is desired)
- Has a test certificate to BSEN 1856-1:2003 and BSEN 1443:2003
- Product dims: height 160mm, width 310mm
- See fuel chart for suitability of painted, unpainted and stainless versions
- Suitable for pot sizes up to 280mm outside diameter
- For pots between 125mm and 175mm (5" to 7"), an adaptor plate is also required
- Effective anti downdraught qualities
- Withstands flue temperatures up to 200°C
- All stainless steel version available (pic 17)
- Backed up by MAD cowl money back guarantee
- Recommended birdguard is removed for solid fuel applications.



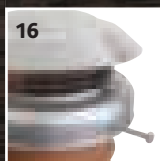
13
MAD Junior
Terracotta
strap fix



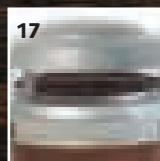
14
MAD Junior,
Terracotta, bolt fix



15
MAD Junior,
Aluminium, strap fix



16
MAD Junior,
Aluminium, bolt fix



17
MAD Junior,
Stainless steel

FUEL SUITABILITY

	COAL	WOOD	GAS	OIL	SMOKELESS FUELS
MAD Senior terracotta	✓	✓	✓	✓	✗
MAD Senior stainless steel	✓	✓	✗	✓	✓
MAD Junior aluminium	✓	✓	✓	✓	✗
MAD Junior terracotta	✓	✓	✓	✓	✗
MAD Junior stainless steel	✓	✓	✓	✓	✓

We recommend that the stainless steel version is used on more corrosive fuels such as smokeless fuel.

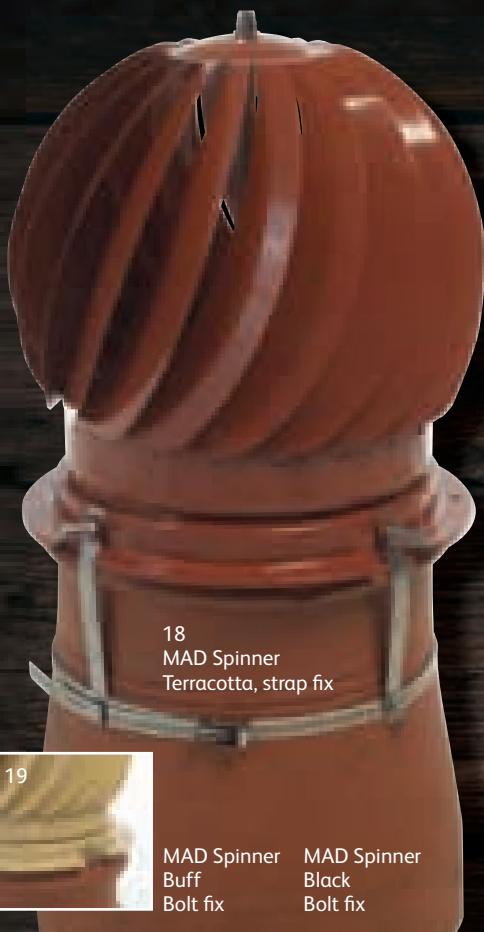
MAD SPINNER

ASSISTING VENTILATION AND ERADICATING DOWNDRAUGHT

There are two models of MAD Spinner cowl: the larger Standard Spinner cowl and the smaller Mini Spinner.

The Standard Spinner cowl fits sizes 100mm up to 250mm inner diameter, and the Mini Spinner fits flue sizes from 80mm up to 180mm inner diameter. Both types can be fitted to flue pipe using the MAD Flue Pipe Adaptors (pics 41 and 44), which provide extra support with a flue pipe application fitment.

Both types, operate on the principle that the spinning action produces a positive upward draught in the chimney which draws the smoke out and increases ventilation. Therefore, fitting a MAD Spinner cowl is one of the most effective ways of eradicating a down draught in your flue or chimney. The spinner cowl is made from stainless steel and cast aluminium. The MAD Spinner is offered in a range of colours to match various chimney colours. Painted options also reduce the glare caused by the highly polished version into neighbouring properties whilst spinning.



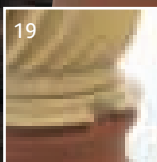
18
MAD Spinner
Terracotta, strap fix

WHAT OTHER MANUFACTURERS WON'T TELL YOU...

As a company renowned as being a market leader in the field of metal engineering, we have carried out exhaustive tests on the MAD Spinner cowl in varied conditions and can honestly say it is the strongest and most durable spinning cowl on the market. There are things that other companies don't tell you. As a responsible, customer orientated organisation, we ensure that you are made aware of this information (that relates to all spinning chimney cowls with a globe top not just the MAD brand):

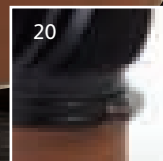
- No spinning cowl can be fitted to a flue less than 4 metres high
- Operating temperatures above 200°C at point of termination will dramatically shorten the products life expectancy
- Unseasoned wood will cause the cowl to seize
- Using smokeless fuel will reduce the life expectancy of any spinning cowl dramatically
- For areas with consistently high wind speeds the spinner cowl should be avoided

That said, our spinning cowls are made to the highest standards, and should a customer want to use a MAD Spinner cowl outside our warranted recommendations, then we have spares on hand, that are manufactured at our factory in South Wales ensuring that our spinning cowls can be serviced and/or repaired more frequently.



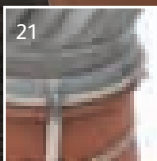
19

MAD Spinner
Buff
Bolt fix



20

MAD Spinner
Stainless steel
Strap fix



21

FEATURES & SPECIFICATIONS:

- Fits a range of flue sizes up to 250mm
- Withstands flue temperatures up to 200°C
- Backed up by the MAD cowl money back guarantee
- Sold fully assembled and ready to fit
- Sold complete with a stainless steel strap fixing or alternatively hook fixing, which ever desired, see picture 8 on page 5
- Has a test certificate to BSEN 1856-1: 2003
- Highly effective in preventing downdraught and increasing ventilation
- Product dimensions: height 320mm, width 300mm

MAD MINI SPINNER

THE LITTLE BROTHER

The Mini Spinner is made to the same high standards as the original spinner cowl, both in specification and design. The only difference is the smaller size – making it more suitable for smaller flue pipes and/or ventilation pipes used at landfill sites.

FEATURES & SPECIFICATIONS:

- Stainless steel construction with a die cast aluminium base
- Fits flue sizes 80mm – 180mm
- Withstands flue temperatures up to 200°C
- Backed up by the MAD cowl money back guarantee
- Sold fully assembled and ready to fit
- Sold complete with a stainless steel strap fixing kit
- Has a test certificate to BSEN 1856-1:2009
- Highly effective in preventing downdraught and increasing ventilation
- See fuel suitability chart below

IMPORTANT NOTE:

All revolving chimney cowl will require annual maintenance to remove debris that may stop them spinning.

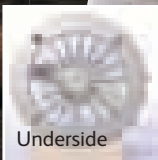
FLUE PIPE ADAPTOR

Another product from MAD cowls is the spinner adaptor sleeve for 5 and 6 inch flue pipe applications.

These spinner adaptors (pics 41 & 44) are designed to improve the stability of a spinning cowl when fitted to a flue pipe whilst also focussing the revolving action to increase draw on the flue.



MAD Mini Spinner
Stainless Steel, bolt fix



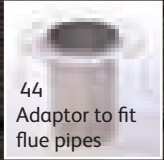
Underside



41
Adaptor to fit
the flue pipe



Sleeve



44
Adaptor to fit
flue pipes



43
Mini Spinner
Black

FUEL SUITABILITY

	COAL	WOOD	GAS	OIL	SMOKELESS FUELS
MAD Spinner	✓	✓	✓	✓	✗
MAD Stainless Spinner	✓	✓	✓	✓	✗
MAD Mini Spinner	✓	✓	✓	✓	✗
MAD Mini Stainless Spinner	✓	✓	✓	✓	✗

RAIN COWL

RAINGUARD & BIRD PROTECTION

28. STAINLESS STEEL RAIN COWL

The height size and shape of this cowl makes it very popular amongst chimney sweeps. The tall construction and domed lid allows a sweeping brush right up into the cowl, whilst the stainless steel construction allows for a longer lasting birdguard.

- 1mm Stainless Steel
- Suitable for use with oil, coal, wood and smokeless fuel
- Made from 1mm stainless steel
- Fits chimney up to 260mm
- Inc. stainless steel hose clip
- Supplied fully assembled
- Can be powder coated, terracotta or buff



28
Rain cowl & solid
fuel birdguard,
all stainless steel



26
Rain cowl & solid
fuel birdguard



27
Rain cowl &
multifuel birdguard

26, 27. RAIN COWL

Our budget birdguard provides excellent rain, wind, bird and animal protection and is available with a solid fuel birdguard (1" x 1" large holes) or a multifuel bird guard, which complies with BS5871 as suitable for gas applications.

- No.27 suitable for oil, gas and seasoned wood and No.26 suitable for normal coal, oil and seasoned wood. **Not to be used with smokeless fuel.**
- Made from galvanised steel and powder coated terracotta
- Includes stainless steel hose clip
- Fits chimney up to 260mm
- Supplied fully assembled
- Test Certificate to BSEN 1856-1:2009

FUEL SUITABILITY

	COAL	WOOD	GAS	OIL	SMOKELESS FUELS
RAIN Cowl Stainless	✓	✓	✓	✓	✓
RAIN Cowl Painted	✓	✓	✓	✓	✗
ADERYN Spinner	✓	✓	✓	✓	✗

ADERYN SPINNER

RAIN & DOWNDRAUGHT PROTECTION

A directional cowl that provides complete dynamic protection to the chimney flue from wind-driven rain and downdraughts. The body of the Aderyn cowl provides a protective shroud rather like a large umbrella, and the pivot point is positioned behind the head which acts as a wind vane ensuring that the cowl always faces away from the wind, fully protecting the chimney pot.

Wind-driven rain normally enters any standard cowl, and this can result in water being funnelled directly down into a stove (in the case where a chimney liner is installed), causing rusting or damage to the stove lining. The Aderyn cowl prevents any wind-driven rain entering the chimney, whether in heavy vertical rain or the near-horizontal gale-driven showers and squalls that are a common feature of weather in the UK.

The aerodynamic design and quality of the twin sealed bearings ensures that the Aderyn cowl responds instantly to any breeze, protecting the chimney at all times.

INCREASED CHIMNEY DRAW

To work properly a chimney must have draw, both to clear the products of combustion and to provide fresh combustion air to the fire. This is equally true whether the chimney is serving a traditional open fire, a fire-box or a wood or a multifuel or woodburning stove. Because the Aderyn cowl faces away from any wind, a low pressure zone is created on the lee side just above the chimney pot. The result is better chimney function, which reduces the chances of tar and creosote formation that can occur in sluggish flues.

DOWNDRAUGHT, RAIN & BIRD PROTECTION

The wind blowing across the top of any chimney, combined with the proximity of other buildings, trees or roof pitches will create turbulence which can result in downdraught and cause the fire or stove to puff clouds of smoke into the room.

Tests and observations have shown that the Aderyn cowl is one of the best. Unfavourable downward air flows are split by the cowl and directed over each side of the pot, whilst the low pressure zone just above the pot is preserved, maintaining chimney function.



[Aderyn is Welsh for Bird]

It is important it is to keep rain out of a chimney and to keep the flue dry. Soot and tars are acid, which are harmless when dry, but the addition of moisture will allow the formation of strong sulphuric and nitric acids which attack the fabric of the chimney. This is the cause of the commonly seen defect where the top few brick courses of the stack are falling apart, or where a stack is leaning due to acid-induced swelling of the mortar on one side. The Aderyn cowl provides exceptional dynamic rain protection by shielding the chimney from both vertical rain in still conditions and wind-driven rain glancing in at any angle right down to the near-horizontal experienced in the worst storm-force winds.

Observations have shown that birds do not like the Aderyn cowl. For obvious reasons! In addition, the moving body prevents birds perching and discourages nest-building.

FLUE PERFORMANCE

The cast aluminium base is exceptionally free-flowing and offers very low impedance to flue gases. The open body has a clearance area greater than the chimney pot cross-sectional area and likewise offers very low impedance to smoke and flue gases. An effect of standard Chinese-hat type cowls is the tendency for smoke to 'bounce' off the underside of the cap and travel downwards. In certain conditions, this is enough to send the smoke right down to the ground where it can become a nuisance. The Aderyn Cowl simply deflects the smoke, which can then continue to rise.

BIRDS CAN BE A REAL PEST!

The nuisance caused by birds, small animals and leaves entering the chimney can be resolved by fitting a cowl from our birdguard range, the benefits of which include:

- Stopping birds being trapped behind back panels
- Reducing rain entry, thus preventing associated damage to the chimney structure



MAD HIGH CHIMNEY BIRDOGUARD

STAR SELLER

OUR BEST-SELLING BIRDOGUARD

Ever popular – manufactured from high quality aluminium and galvanised steel, with stainless steel component parts. Using these materials makes this a very durable product that fits chimney pots up to 285mm external diameter. The corrosion resistant 1" x 1" mesh prevents debris clogging the cowl whilst in use. It is easy to fit in seconds with three pre-attached arms that allow the stainless steel strap to hold the cowl onto the chimney pot.



46
MAD High Chimney Birdguard, terracotta, solid fuel, strap fix



FEATURES & SPECIFICATIONS:

- Fits flues up to 275mm outside diameter
- Corrosion resistant mesh, with 1" x 1" opening to prevent clogging
- Strap fixing

FUEL SUITABILITY

	COAL	WOOD	GAS	OIL	SMOKELESS FUELS
MAD HC Birdguard	✓	✓	✗	✓	✗
Junior Birdguard	✓	✓	✓	✓	✗
Junior Birdguard Stainless	✓	✓	✗	✓	✓

JUNIOR BIRDOGUARD

23, 24. JUNIOR BIRDOGUARD

Available with a multifuel birdguard (pic. 23) which allows the cowl to be used for gas and oil as well as solid fuel, or pic. 24 which is purely for solid fuel applications. This type has a larger mesh to reduce clogging, associated with burning timber.

The Junior Birdguard is made from high quality aluminium and is assembled using 16 stainless steel rivets to provide extra support and durability in use.

FEATURES & SPECIFICATIONS:

- Supplied fully assembled
- Backed up by the MAD cowl money back guarantee
- Fits chimney up to 260mm outer diameter
- Gas birdguard (pic.23) complies with BS5871:2005
- Test Certificate to BSEN 1856-1:2009
- Incl. stainless steel hose clip
- Painted in a highly durable terracotta powder coat finish



23
Junior Multi fuel
birdguard, terracotta
(solid fuel & gas)



24
Junior
Solid fuel birdguard



25
Junior birdguard,
stainless steel

25. STAINLESS STEEL JUNIOR BIRDOGUARD

A more durable and long lasting Birdguard made from stainless steel.

FEATURES & SPECIFICATIONS:

- Can be fitted over a pot hanger
- For solid fuel and smokeless fuel
- Fits chimney up to 260mm diameter
- Made completely from stainless steel
- Incl. stainless steel hose clip
- 1 inch x 1 inch stainless steel birdguard
- Supplied fully assembled
- Great value for money

STAINLESS BIRDOGUARD WITH BASE



31
Terracotta powder coated
Stainless Steel birdguard with base

31. STAINLESS STEEL BIRDOGUARD WITH BASE

FEATURES & SPECIFICATIONS:

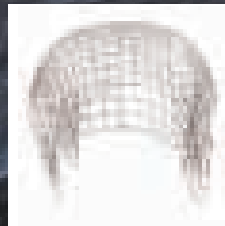
- Designed to prevent bird, leaf or vermin entry, whilst helping to prevent rain entry
- Made from 1mm stainless steel and powder coated terracotta or buff
- Fit onto chimney pots up to 300mm outer diameter
- Stainless steel hose clip
- 1" x 1" birdguard to stop any debris build up
- Supplied fully assembled
- Provides a larger opening for escaping gases, than standard birdguards
- Can be used with coal, seasoned wood, oil and smokeless fuel

47, 48. BIRDOGUARD 200/225

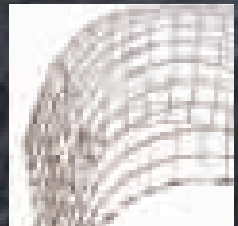
General application birdguard for use with coal and seasoned wood.

FEATURES & SPECIFICATIONS:

- Pushes into flue outlet
- Packs are sold in sizes 200mm or 225mm



47
Birdguard 200



48
Birdguard 225

CAPPING COWL

Used to cap off unused chimneys. Also allows good ventilation; by raising the arms upwards or downwards you can adjust the level of ventilation required.

FEATURES & SPECIFICATIONS:

- Powder coated terracotta or buff for longevity
- Inc. stainless steel hose clip



34
Capping cowl



35
Sprung
birdguard

SPRUNG BIRDOGUARD

Designed to stop large birds and debris entering the pot. The sprung birdguard is manufactured from thick steel with a powder coated terracotta finish. It is designed to spring to the diameter of the pot, fitting both round and square pots up to 250mm.

SOLID FUEL LINER COWL

FITS TO IN-SITU CHIMNEY POT

37. SOLID FUEL CHIMNEY LINER COWL

The solid fuel chimney liner cowl is designed to fit a flexible flue liner to a birdguard cowl application, without the need to remove the chimney pot. The superior quality of this product makes it the best on the market.

The image below shows how the cowl attaches to the chimney liner with a strong stainless steel fixing strap and hose clip. The cowl then sits on the pot with another stainless steel hose clip holding it securely.



37
Solid fuel chimney liner cowl, terracotta

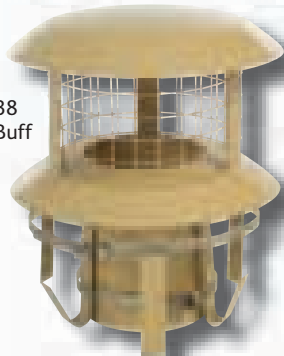
FITTING



FEATURES & SPECIFICATIONS:

- Painted terracotta, buff or natural finish
- Fits chimney pots up to 300mm outside diameter
- Made from strong 1mm stainless steel
- Suitable for coal, wood, oil and smokeless fuel
- Includes 2 x stainless steel hose clips
- Supplied fully assembled
- Provides protection against birds, leaves, vermin and rain
- Eliminates need to remove chimney pot
- Backed up by the MAD cowl money back guarantee
- Available for 5, 6 and 7 inch chimney liner
- Large opening for escaping gases

38
Buff



FUEL SUITABILITY

	COAL	WOOD	GAS	OIL	SMOKELESS FUELS
Solid Fuel Liner Cowl	✓	✓	✗	✓	✓
Anti Downdraught Liner Cowl	✓	✓	✓	✓	✓

ANTI DOWNDRAUGHT LINER COWL

39. ANTI DOWNDRAUGHT LINER COWL

This cowl is designed to fit a flexible flue liner to our most popular anti downdraught cowl – the MAD Cowl (see page 4 for the features and performance of a standard MAD Cowl, performance of this Liner version will be the same).

The aerodynamic shape allows it to combat downdraught whilst fitted to a liner application. It uses the same fixing techniques as the solid fuel version opposite, allowing installation to a liner, eliminating the need for the pot to be removed.

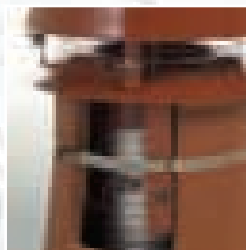
FEATURES & SPECIFICATIONS:

- Painted terracotta or buff
- Fits chimney pots up to 300mm outside diameter
- Inc. 2 x s.steel hose clips
- Supplied fully assembled
- Stainless steel birdguard
- Made from stainless steel
- Backed up by the MAD cowl money back guarantee
- Removable lid for sweeping
- Eliminates need to remove chimney pot
- Available for 5, 6 and 7 inch chimney liners

FITTING



39
Anti Downdraft liner
cowl, terracotta



Removable lid



Stainless birdguard

51
Terminal
Cowl



52
Gas Cowl
Certified to
BSEN 1856-1:2009



50
Plate
and
Clamp



40
Pot hanger



FITTING



With
Junior
bird-
guard



With
MAD
Junior



This simple pot hanger is great value for money and is made entirely from stainless steel. It uses the same securing strap system to attach to the liner as our liner cowls and allows a chimney cowl to be fitted over the top of it. Above are a selection of cowls we recommend fitting with this pot hanger, which includes an anti draught cowl and our great-value all stainless steel birdguard.

FEATURES & SPECIFICATIONS:

- Pot doesn't have to be removed for fitting
- Available for 5, 6, and 7 inch chimney liner
- Sold ready assembled with 1 x stainless steel hose clip
- Can be made for square pots

As well as our mainline range of MAD Cowl and others, we also produce a range of products for unusual chimney applications.

These unusual cowls are made to order and allow suitable bird guards, anti down draught chimney cowls and caps for non-standard chimney applications such as square pots, large pots and bishops pots.



32. SQUARE BIRDCUARD

Specifications of this cowl are the same as the rain cowl, however, it is designed for square pots. Made from galvanised material and powder coated terracotta. Sold complete with stainless steel hoseclip for use with coal wood and oil.



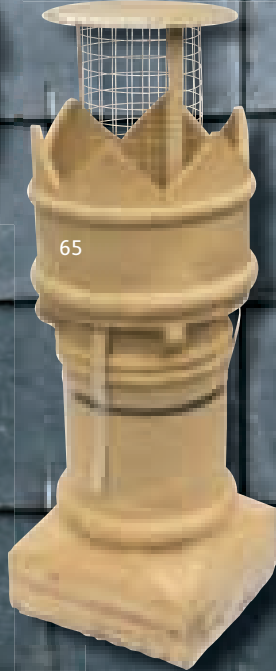
62. SQUARE CAPPER

With a specification similar to product 34 on page 15, this square capping cowl provides ventilation whilst shielding unused/disused chimneys from water ingress.



64. MAD SQUARE ANTI-DOWNDRAFT-COWL

Our anti-down-draught cowl for square pots. A fully stainless steel MAD Cowl suitable for square pots up 300mm square. Specification and suitability same as product number 63 on page 5



65

65. BISHOPS' POTS' COWLS

Chimney liner cowls and bird guards for bishops pots – be-spoke stainless steel bird guards and liner hangers suitable for bishop pot applications. This chimney cowl can be made especially for gas applications or alternatively for solid fuel (including smokeless fuel applications).



36. SPARK ARRESTOR

The MAD spark arrester has two mesh inserts. This means that it helps stop any debris that is still alight. Fits pots 125 – 250mm

36



58. NEW LARGE BASE SENIOR COWL

This cowl is designed to cater for oversized chimney pots. Fits diameter above 290mm up to 400mm. Every bit as effective as the standard sized Mad senior cowl on page 6.



33. LARGE BIRDCUARD

Designed for larger chimney pots, this cowl is available as a 320 or 370mm diameter application. Powder coated in a durable terracotta or buff finish with a stainless steel extra long hose clip, for use with coal wood and oil.

33



66. SQUARE CHIMNEY LINER COWL

Stainless steel square chimney liner cowl with specification similar to product 37 on page , but allows a liner to be fitted directly to the cowl where the application is a square pot

66



MADCOWLS

PROBLEM SOLVING CHIMNEY COWLS

GOOD ADVICE...

All flues and chimneys should be periodically checked and swept by a professional chimney sweep to prevent blockages from a number of causes, including nests, soot build up or other debris blockages.

OUR QUALITY GUARANTEE

All MAD cowls listed with the phrase 'Backed up by the MAD Cowl money back guarantee' are covered by a 12 month guarantee against faulty material or workmanship.

In addition, these items carry a further guarantee that should they fail to remedy the initial problems after three months, then they may be returned to the stockist with proof of purchase, in order to obtain a refund.

This guarantee will not apply where a cowl has been used with fuel, or in conditions, outside our recommendations.

MADCOWLS.CO.UK

01685 811882

Fax: 01685 813861 sales@madcowls.co.uk



jdburford.co.uk info@jdburford.co.uk

Unit 2D, Hirwaun Industrial Estate, Aberdare,, South Wales, CF44 9UP, UK